

BELAIRFINEART

In January 2018, Bel-Air Fine Art proudly opened the doors of its first UK space located in the heart of Mayfair, making BAFA London the 14th gallery to join the group. Appreciated by collectors and well respected in the industry, Bel-Air keeps expanding and has landed in London to present within its 400sqm space a dynamic selection of its most prominent artists.

Founded in 2004 by François Chabanian and joined by his son Gregory, the Bel-Air Fine Art group has been focusing and sharing its expertise in contemporary art for more than fifteen years. Exhibiting both established and emerging artists throughout Switzerland, France, Belgium and Italy, alongside two new galleries in Miami which opened last year. The Bel-Air group is active participating in international art fairs and organising global exhibitions in Europe and the US as well as in the Middle East, including Dubai, Abu Dhabi and Beirut.

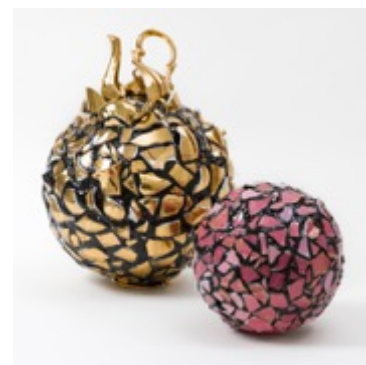


On the 11th of April 2019 Bel-Air Fine Art London is excited to unveil a new body of work by Sandra Shashoua in her upcoming exhibition

Balancing Act, showcasing a series of sculptures conceived in celebration of joy, integrity and balance, that continue to work through the complexities of vulnerability and fragility that were first established in her earlier works.

Resilience is a new series which moves beyond traditional stylistic tropes of framing and hanging, and into a playful sculptural mode that incorporates the stillness and contained beauty of classical composition. Spheres and other perfect geometric forms predominate, an echo of the precise aesthetic programmes of classical antiquity. This formal rigour is offset by a lightness and humour that ruptures these codes, and one that finds the sculptures stacked or propped against each other in unpredictably engaging compositions.

In *Resilience*, Shashoua makes reference to the ancient decorative practice of mosaic, juxtaposed with a suite of contemporary surfaces – concrete, plastic, resin – that bring the sculptures into a timeless space where histories of art collide in fruitful exuberance. Shashoua updates the use of her signature materials – dismantled and reconfigured fine china handpicked by the artist for its singular exquisite delicacy – to develop new forms that, whilst losing none of their precariousness and intricacy, represent a maturation of her investigations into the resilience of the human spirit. The richness and beauty of life and relationships are born witness in this complex interplay of elegant formalism, with a reckless freedom of spirit that remains proud and undiminished.



Bel-Air Fine Art London, 105 New Bond Street, W1S 1DN, Mayfair, London

Thursday 11th April 2019, 6:00 to 8:00 pm

RSVP to admin-london@belairfineart.com

BELAIRFINEART
LONDON